



MATERIALS

Caron® Simply Soft® (6 oz/170.1 g; 315 yds/288 m)

Contrast A Off White (39702) **5 balls**

Contrast B Robin's Egg (39780) **1 ball**

Contrast C Gold (39782) **1 ball**

Contrast D Persimmon (39754) **1 ball**

Size U.S. H/8 (5 mm) crochet hook **or size needed to obtain gauge.**

 CROCHET | SKILL LEVEL: EASY

ABBREVIATIONS

Approx = Approximately

Ch = Chain(s)

Dc = Double crochet

Hdc = Half double crochet

Pat = Pattern

Rem = Remaining

Rep = Repeat

Rnd = Round

RS = Right side

Sc = Single crochet

Sl st = Slip stitch

Sp(s) = Space(s)

Tog = Together

WS = Wrong side

MEASUREMENTS

Approx 37 x 55" [94 x 139.5 cm].

GAUGE

13 dc and 7 rows = 4" [10 cm]

Motif: Approx 9" [23 cm] square.

INSTRUCTIONS

Make 24 Motifs.

With B, ch 6. See diagram on page 2.

1st row: (WS). 1 dc in 4th ch from hook. 1 dc in each of last 2 ch. Turn.

2nd row: Ch 6. 1 dc in 4th ch from hook. 1 dc in each of next 2 ch. Skip next 3 dc. Sl st to next ch-3 sp. Ch 3. 3 dc in same ch-3 sp. Turn.

3rd row: Ch 6. 1 dc in 4th ch from hook. 1 dc in each of next 2 ch. *Skip next 3 dc. Sl st to next ch-3 sp. Ch 3. 3 dc in same sp as last sl st. Rep from * to end of row. Turn.

Rep 3rd row twice more. Join A at end of last row. 5 blocks of 3 dc. Break B.

With A, rep 3rd row twice. Join C at end of last row. 7 blocks of 3 dc. **Do not** break A.

With C, rep 3rd row twice. Join A at end of last row. 9 blocks of 3 dc. Break C.

With A, rep last row twice. 11 blocks of 3 dc. Fasten off.

Proceed as follows:

1st row: (RS). Skip first 3 dc. Join D with sl st to next ch-3 sp. With D, ch 3. 3 dc in same sp as last sl st. *Skip next 3 dc. Sl st in next ch-3 sp. Ch 3. 3 dc in same sp as last sl st. Rep from * to last ch-3 sp. Sl st to last ch-3 sp. **Turn.**

2nd row: Sl st in first 3 dc. *Sl st in next ch-3 sp. Ch 3. 3 dc in same sp as last sl st. Skip next 3 dc. Rep from * to last ch-3 sp. Sl st to last ch-3 sp. **Turn.** Fasten off.

With A, rep last 2 rows once more. Break A.

With B, rep last 2 rows once more. Break B.

With A, rep 1st row until only 1 block rem. **Do not** fasten off.

Motif edging: With A and RS facing, ch 1. 3 sc in corner. *Work 28 sc evenly across to next corner. 3 sc in corner. Rep from * twice more. Work 28 sc evenly across to first corner. Join with sl st to first sc. Fasten off.

FINISHING

Following Assembly Diagram, join 6 Motifs into 4 Strips as follows:

1st row: With **WS** of 2 Motifs tog, join A with sl st to any corner sc. Ch 1. *Working through both thicknesses,* 1 sc in same sp as sl st. 1 sc in each sc to next corner. Fasten off.

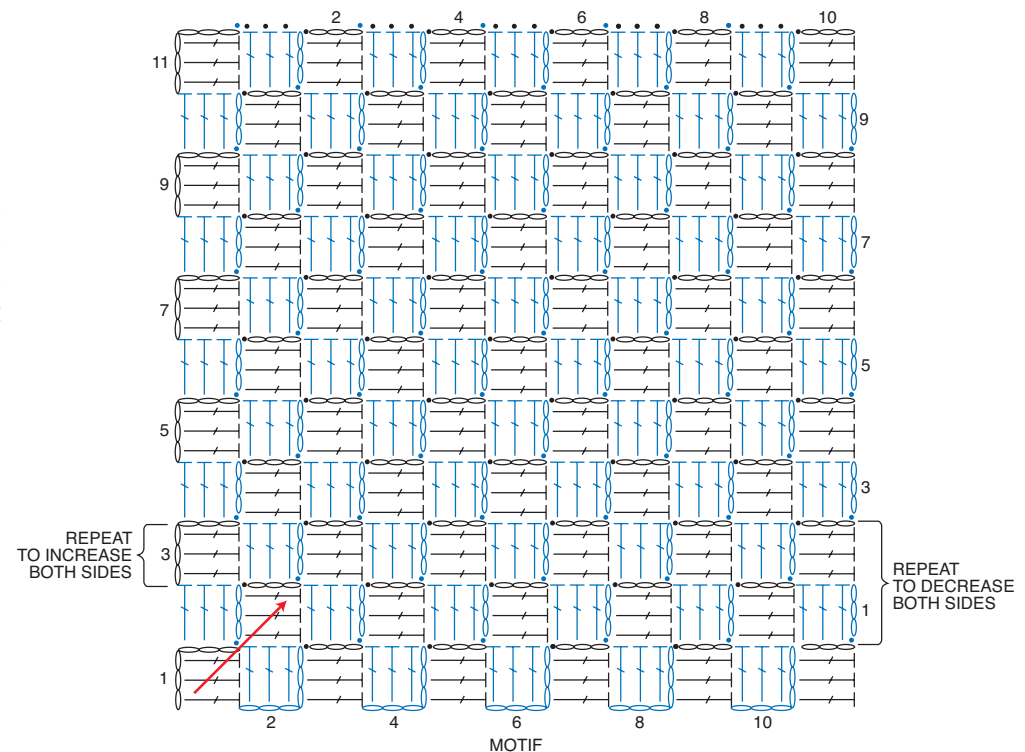
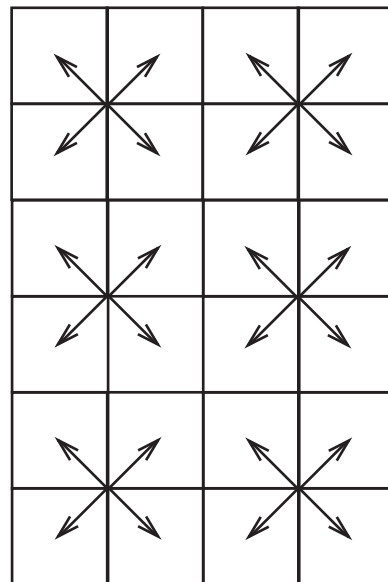
Join 4 Strips into Blanket as follows:

1st row: With **WS** of 2 Strips tog, join A with sl st to corner sc. Ch 1. *Working through both thicknesses,* 1 sc in same sp as sl st. 1 sc in each sc to end of Strip. Fasten off.

Blanket edging: 1st rnd: (RS). Join A with sl st to any corner sc. Ch 1. 3 sc in same sp as last sl st. 1 sc in each sc around, having 3 sc in corners. Join with sl st to first sc.

2nd rnd: Ch 2 (does not count as st). Work 1 hdc in each sc, having 3 hdc in every corner sc. Join with sl st to first hdc. Fasten off.

Assembly Diagram



STITCH KEY

- = chain (ch)
- ⊥ = single crochet (sc)
- ⌋ = double crochet (dc)